



SOIN3

SOLUCIONES  
INTEGRALES DE  
INGENIERÍA PARA LA  
INDUSTRIA

THINKING OUT OF THE BOX



SOIN3

# Integral Solutions of engineering for the industry

## Marketing of consumables

- Corrugated Plastic
- Foam
- Durawood
- Bubble wrap.



## Design and manufacture of automotive packaging

- Metallic Racks
- Thermoformed
- Dunnage in plastic carton and canvas
- Corrugated cardboard



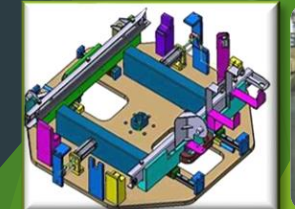
## Specialized Services

- Sequenced Deliveries
- Warehouse Management
- Sub Assemblies.
- Management & Maintenance of packing floats



## Automation & Integration

- Manufacture of smart shoters
- Design of manufacture of Jigs
- Deliveries by AGV
- Ergonomic seats
- Automated supply racks
- Manipulators





# Racks Customized Solutions

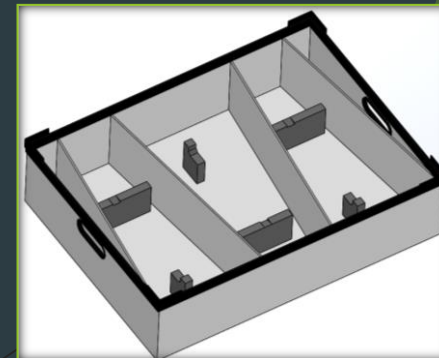
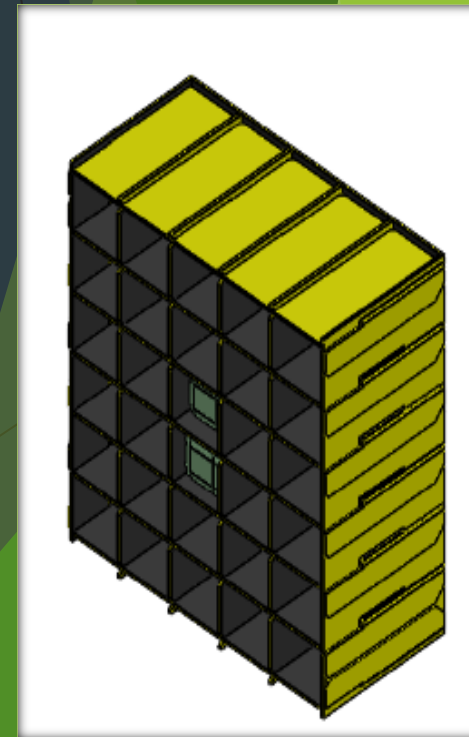
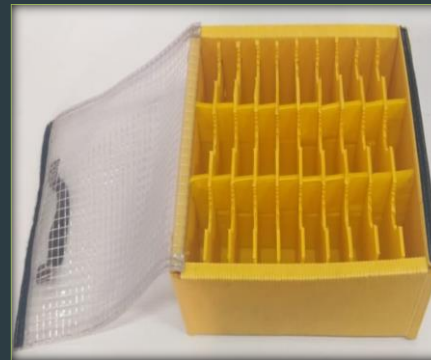




# Custom Packaging Solutions (ultrasonic welding)

According to specifications can be used in differents materials:

- Plastic carton
- PP Corrugated
- Coroplast
- Eurogrey

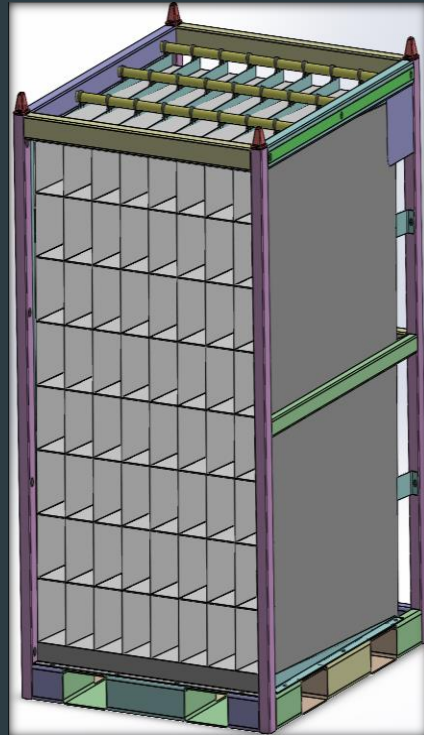




# Custom Canvas Solutions (Design and development)

According to specifications can be used in differents packaging:

- Plastic Boxes
- Bulks container
- Metallic racks
- Special projects





# Custom Thermoformed Solutions (Design and development)

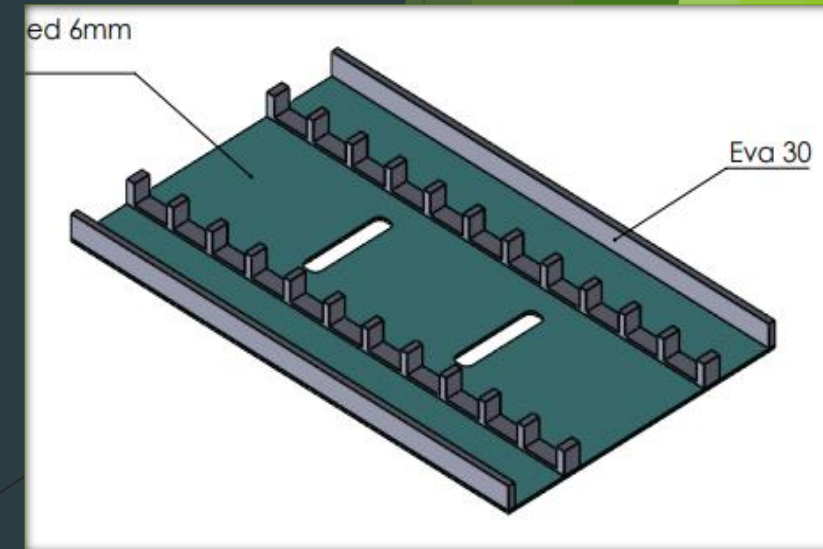
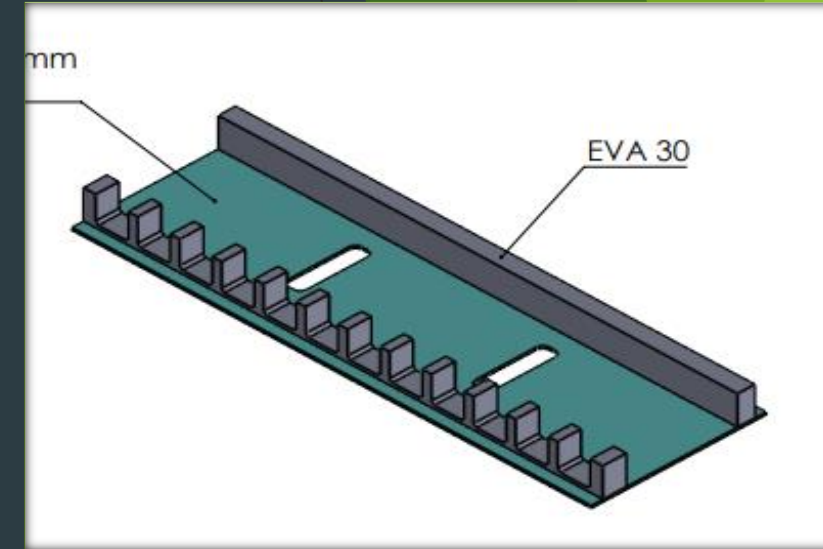
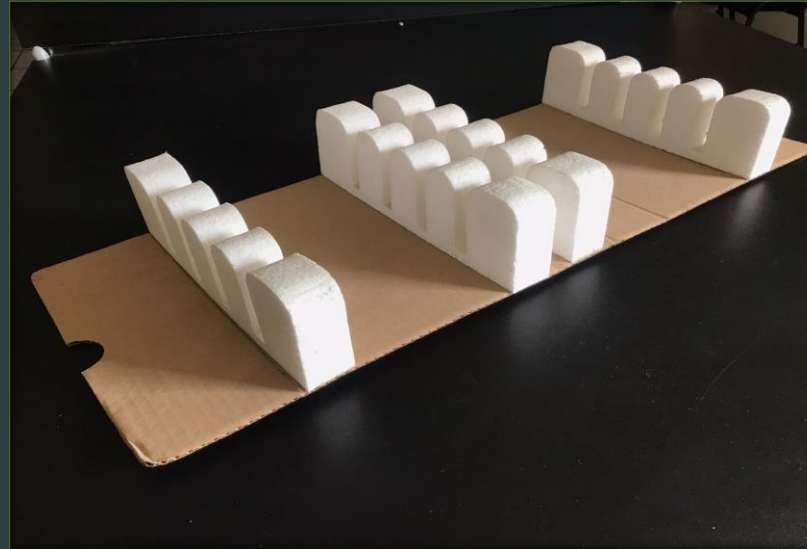






SOIN3

# Custom foam and carton Solutions (Design and development)







SOIN3

# Special Applications

## Durawood & Aluminum & Eco Pipe Applications




**AMS** ADVANCED MECHATRONICS SOLUTIONS, INC.  
AUTOMATION, SMT & CLEAN MANUFACTURING

**ECO-PIPE**

10030 Via de la Amistad, San Diego, CA 92154  
619.661.5985 619.661.5995  
www.ams-fa.com

Advantages of **ECO-PIPE**

-  Eco-Friendly  
ECO-pipe is fully recyclable.
-  Money Saver  
Economical, save money!

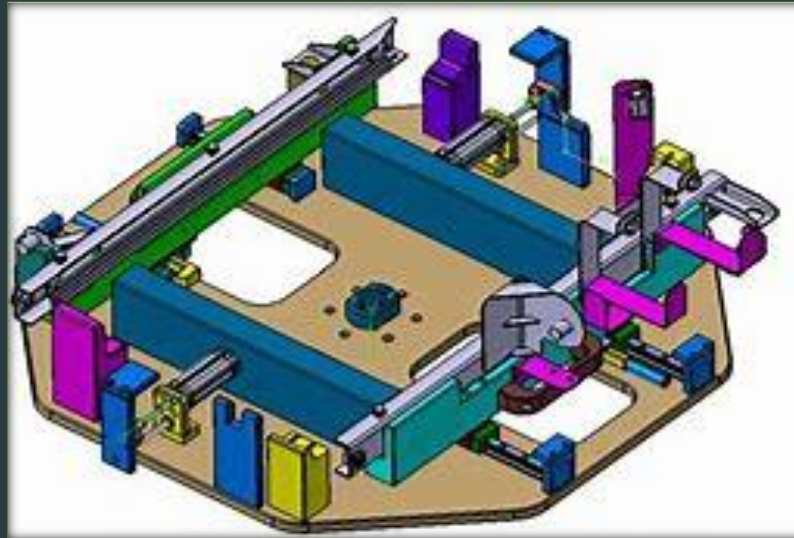




# Automation & Integration Division



Sequencing System



Jigs



Ergonomic assistants



Karakuris devices



Dollies for supply



Automatic supply with AGV





SOIN3

# Specialized services for the automotive sector

## Packging Floats Management

## Sequenced Supply





# FACILITIES AGUASCALIENTES, AGS.





# FACILITIES LEON, GUANAJUATO





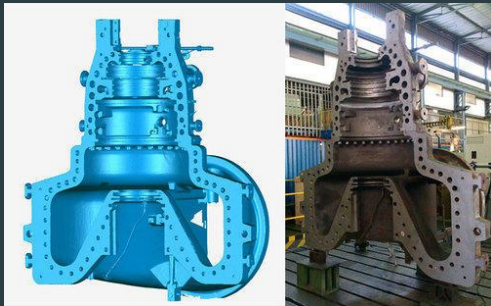
# OFFICE OF REPRESENTATION & SALES SLP - SLP





# Escáner 3d

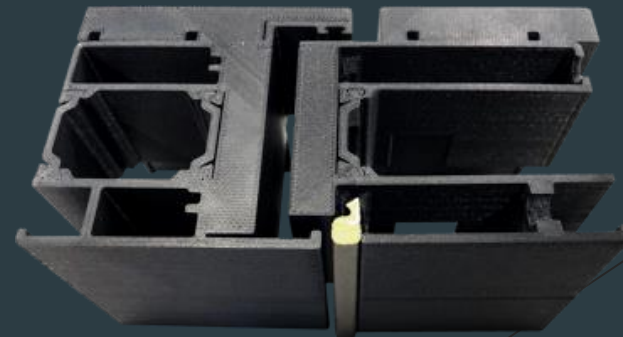
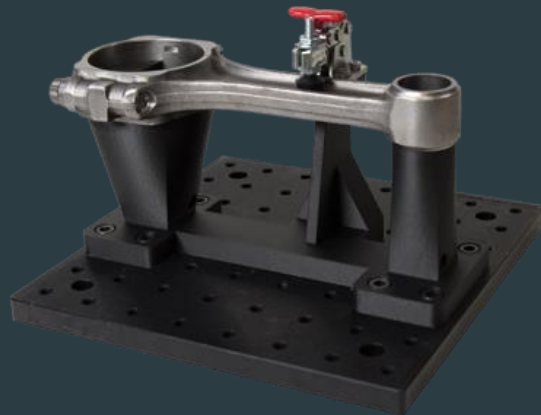
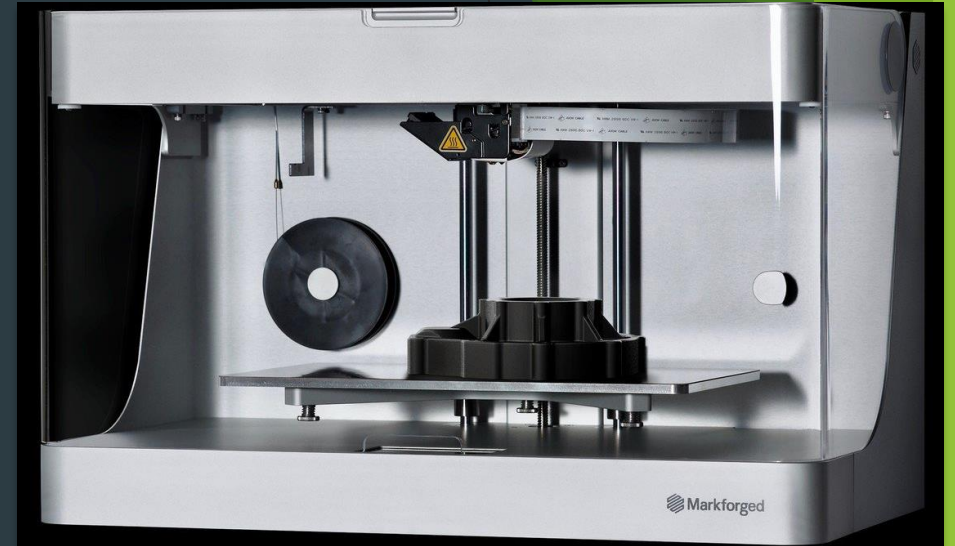
- **Precisión: Maximum 0,100 mm**
- **Exactitud volumétrica: 0,300 mm/m**
- **Volumetric accuracy : 550 000 measurements / second**
- **Texture resolution : De 50 a 250 PPP**
- **Scope of the size of the parties : (recomendado)0,05 - 0,5 m**





# 3D Print Service

- **Dimensions of impression: Maximum 320 mm x 132 mm x 154 mm.**
- **Maximum layer resolution : 100 micrones**
- **Printing materials: Carbon Fiber, Glass fiber, Kevlar etc.**
- **Applications: prototyping, final parts, that in automation, etc.**







# Machining Center CNC

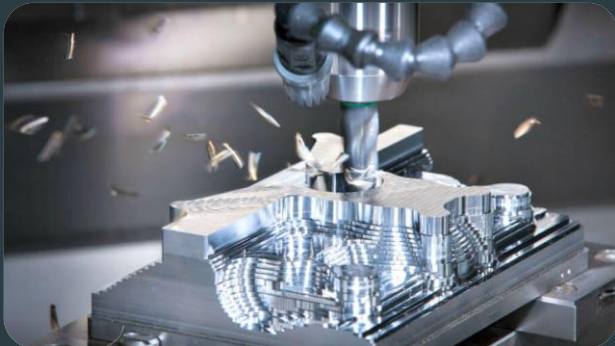
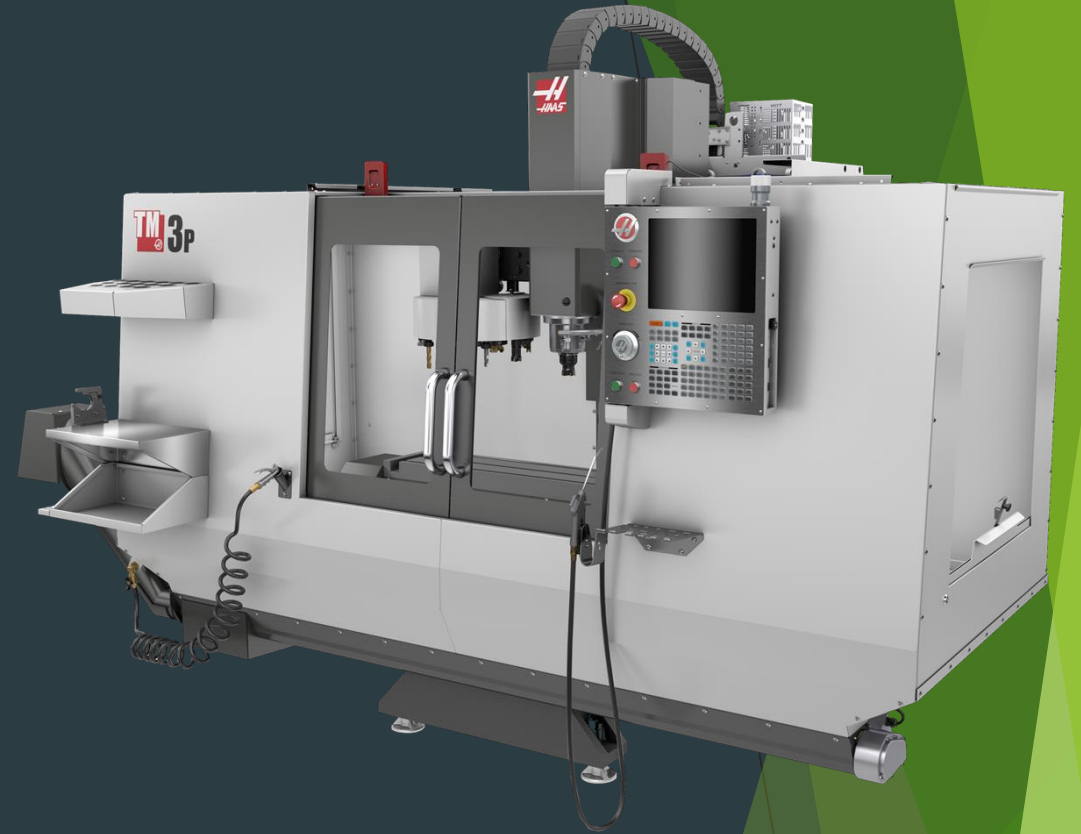
Workspace:

X axis: 1016 mm,

Y axis: 508 mm,

Z-axis: 406 mm

axes of work.



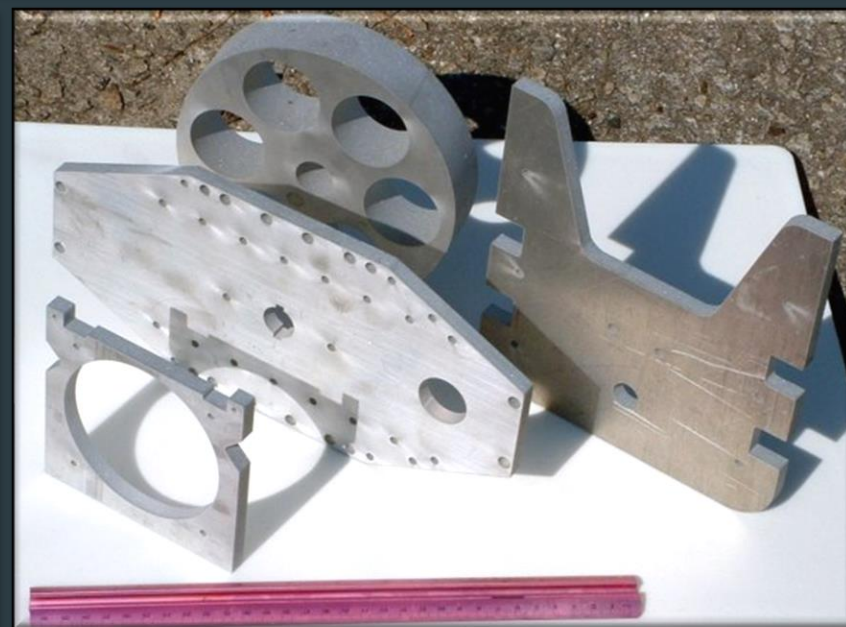


# CUTTING WATERJET PROCESS



## ❖ MAIN FEATURES

- ❑ Cutting Capacity (depth)  
\* From 1.5 to 250 mm.
- ❑ Materials  
\* Metals, glass, stone and composites.
- ❑ Cutting table dimension capacity  
\* 6ft - 10 ft
- ❑ Accuracy  
\* 0.127 mm.







SOIN3

# ELECTROSTATIC PAINT

## ❖ MAIN FEATURES

- ❑ Oven of 4.0 \*3.0\* 2.5 Mts
- ❑ Oven with capacity of burning previous paintings.
- ❑ Capacity to use powder and & liquid paint
- ❑ Capacity of 200<sup>a</sup>.





# WELDING ROBOTS



## ❖ MAIN FEATURES

- Functionality in semi and automatic production lines.
- It can be used for plasma cut
- High welding Quality
- Accuracy and speed welding



# Main Customers

