



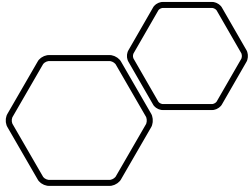
# Active Manufacturing

Prototype and short run stampings, springs, clips and assemblies

# Larger press, laser and wire areas

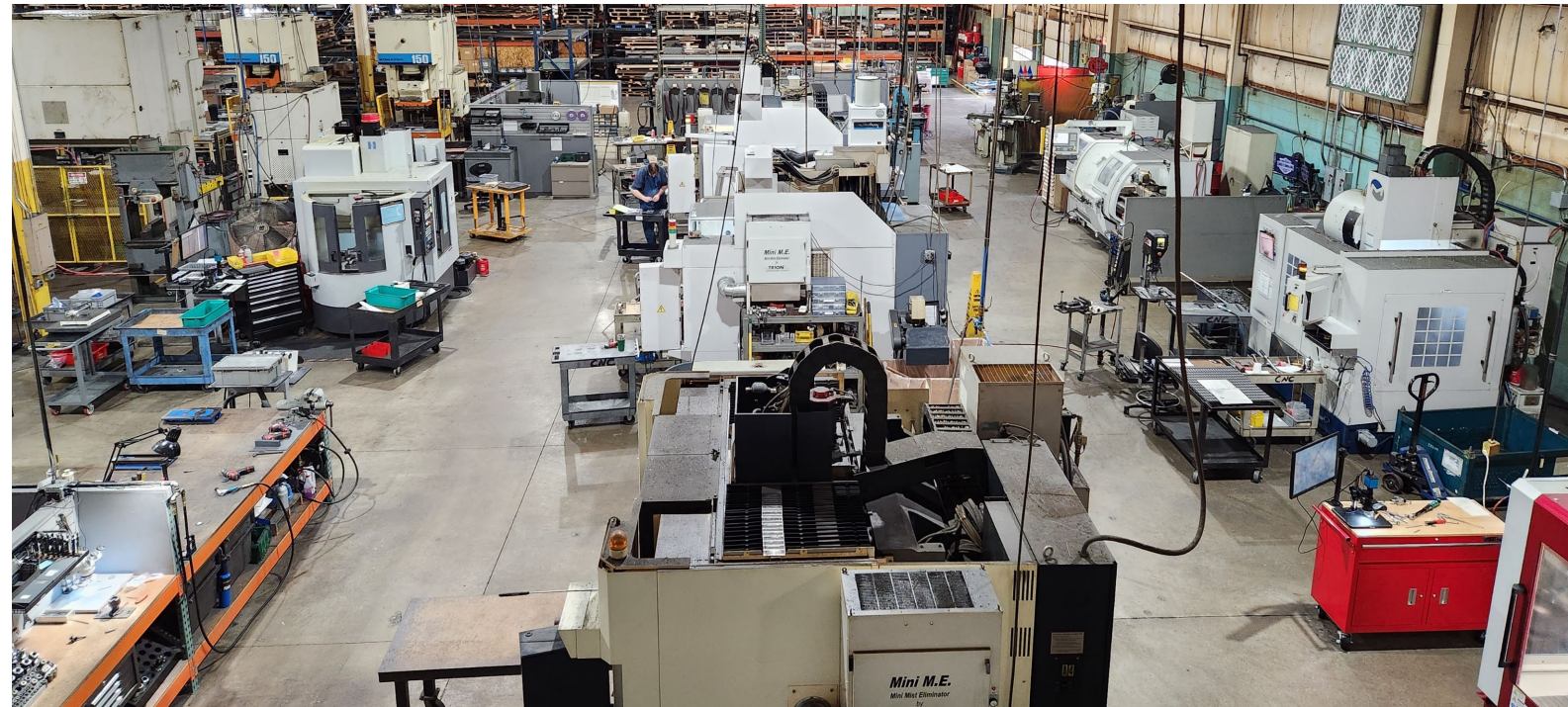
- Largest press 220 tons, (3) 150 ton, (3) 60 ton, (2) 35 ton, 100 ton hydraulic



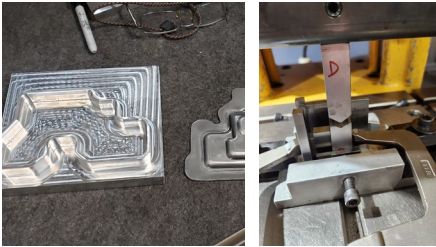
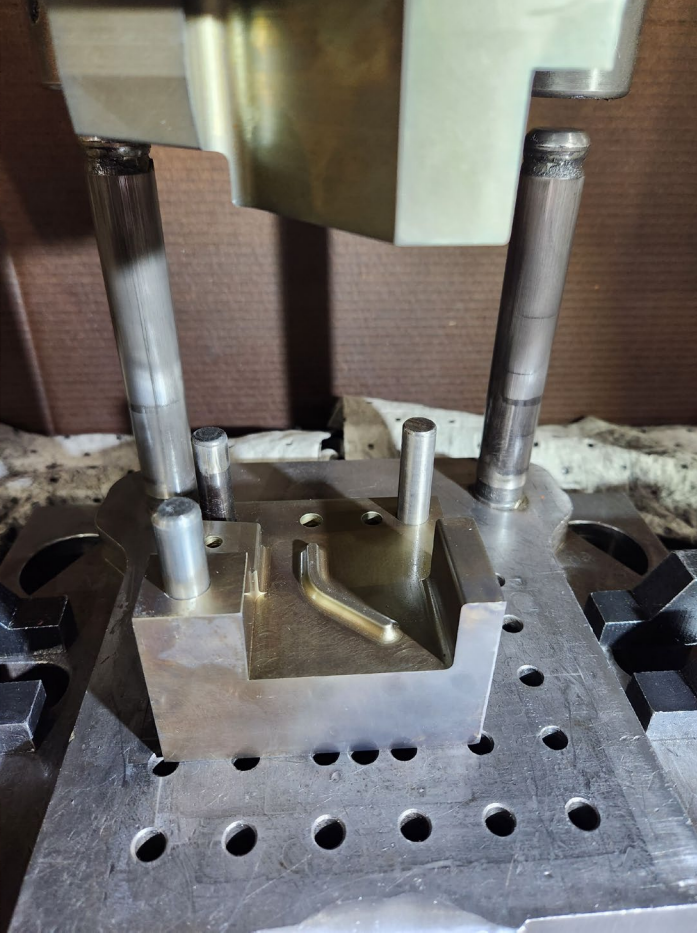
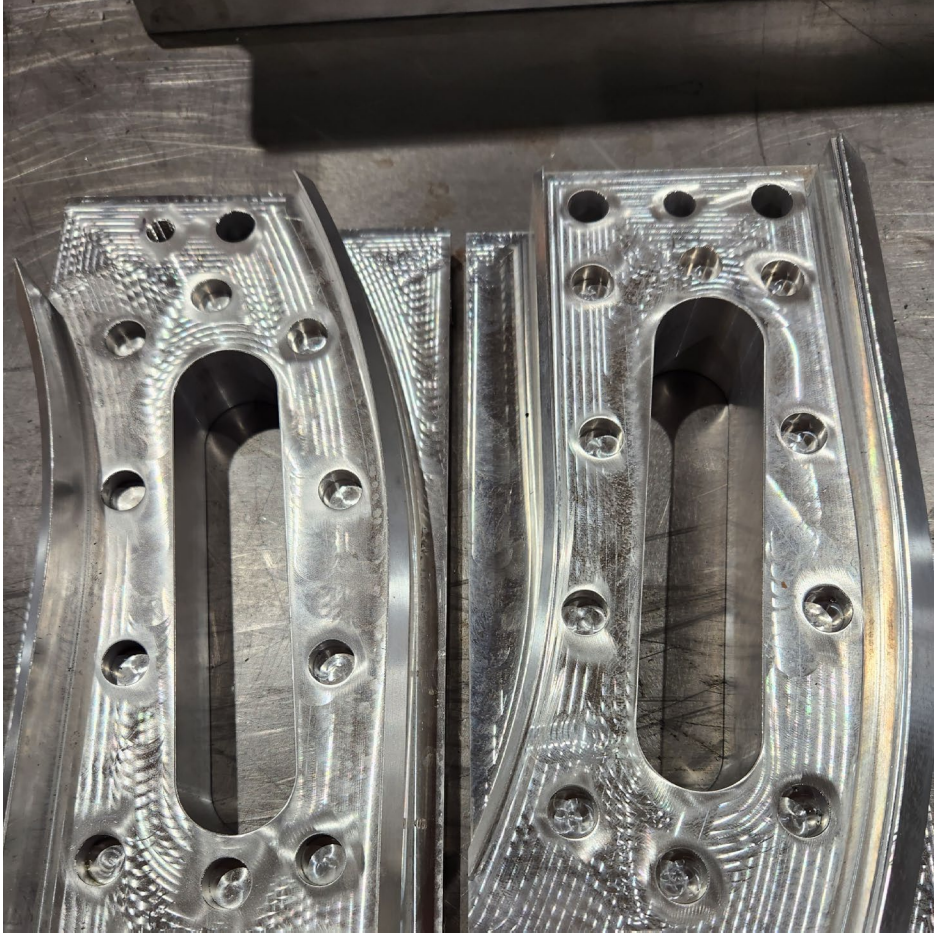


# Machining area

- 6 vertical CNC machining centers, (1) turning center.
- 3, 4 and 5 axis machining
- Spindle speed up to 42,000 rpm



# Tooling examples



# ProActive presses

- (24) total, Servo driven
- Very accurate
- Up to 8000 lbs of force



# White room

- Clean area for medical and micro parts



# Load cell added

- For forming foil stock, added accuracy
- Vision systems added for forming accuracy




# Micro parts

- Foil stock forming down to .002"
- Copper, brass, BeCu
- Stainless, Titanium
- MP35N
- High and low carbon steel



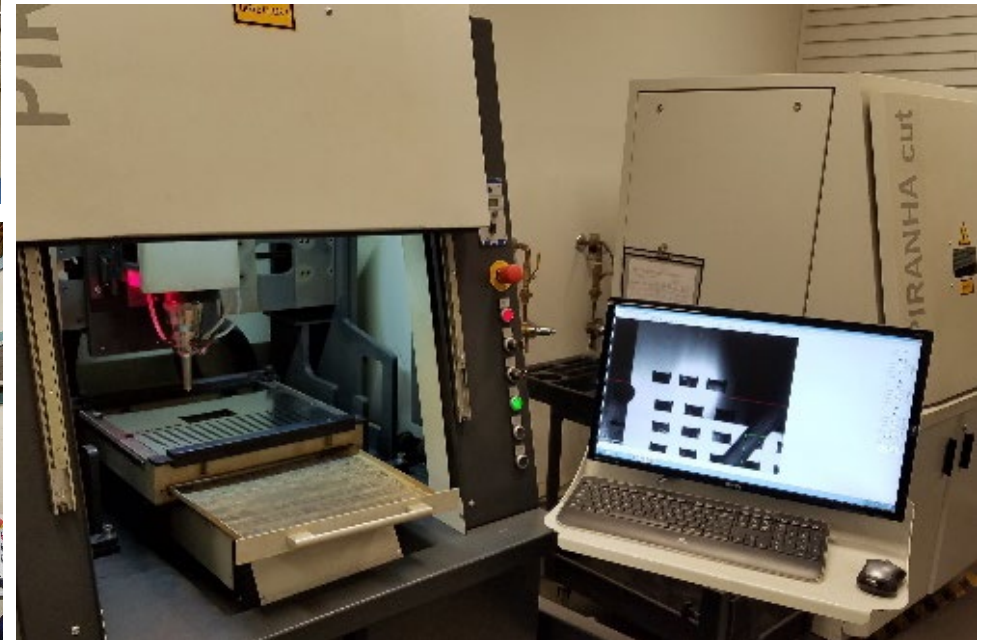




Full inspection capabilities  
in house, cmm, vision  
system, comparators

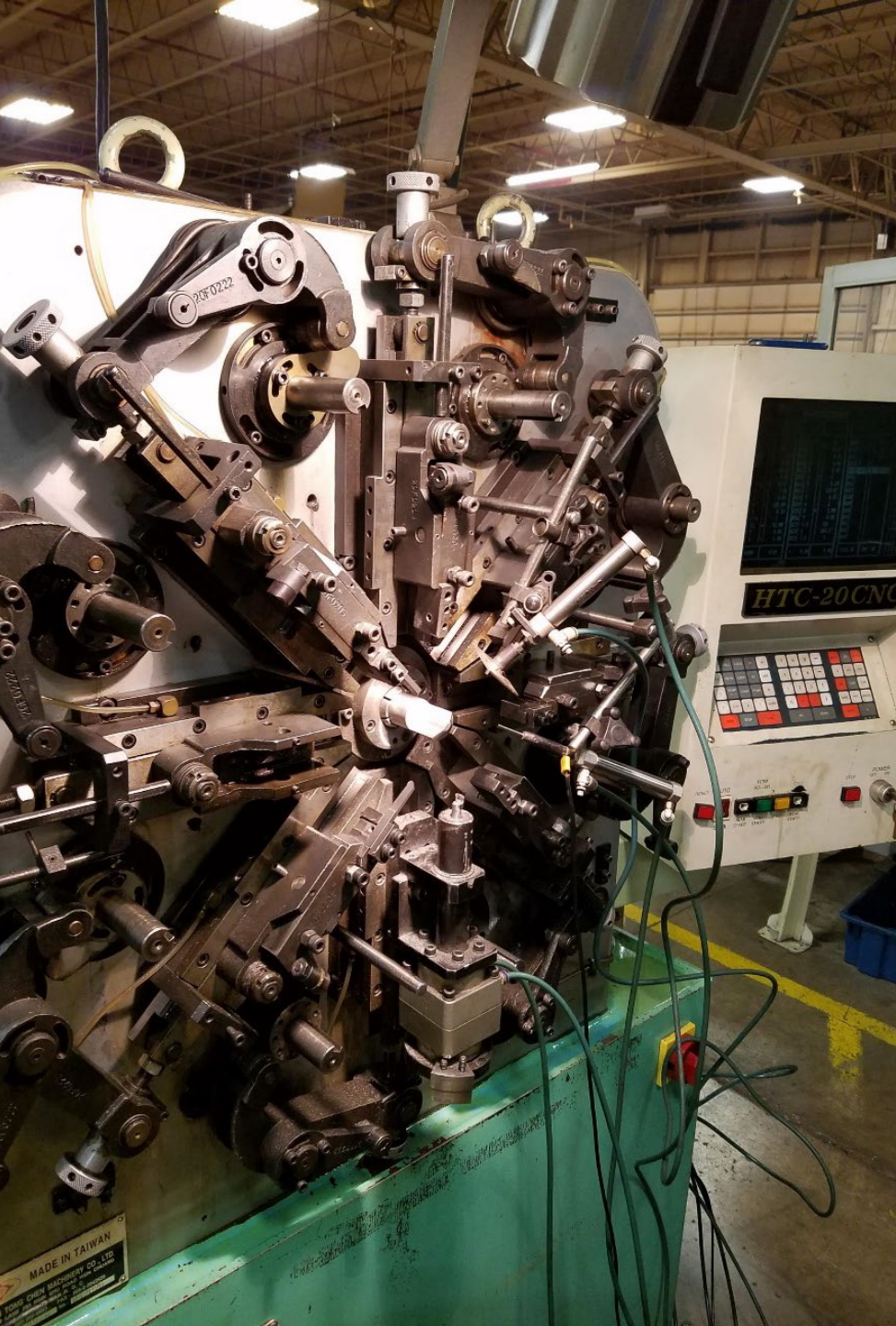
# Laser area

- (1) 6000 watt fiber , 5' x 10' bed, can cut 1" thick material
- (3) Acsys fiber lasers, micro cutting and tube cutting capabilities, foil stock, red metals
- CO2 lasers, 6 axis, larger parts and tube cutting



Wire EDM room, 4 machines down to .004" wire plus hole popper

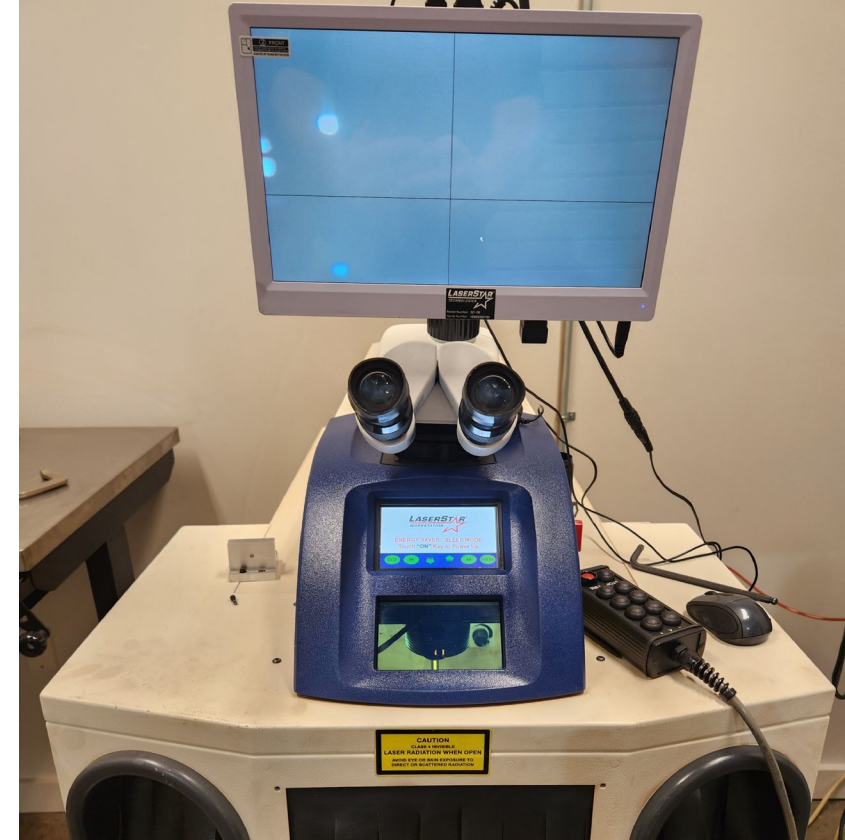
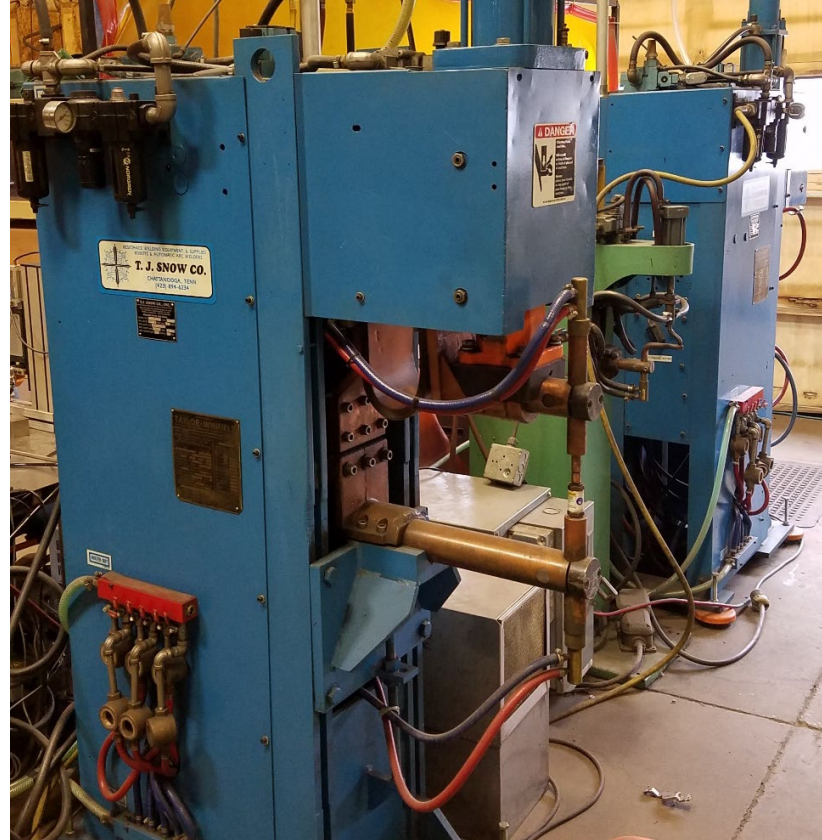
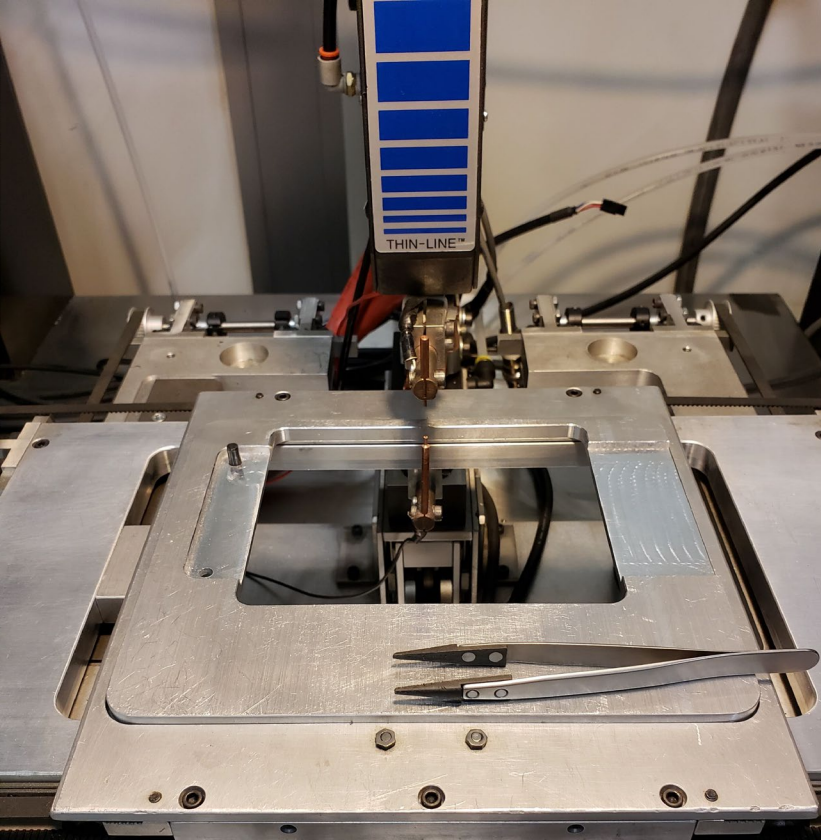




# Wire department

---

- 2 machines, wire forming up to .250"
- Coiling .020"-.078"



welding

- Spot welding
- Micro spot welding
- Laser welding
- Mig and tig

