



BOLTRONIC

We are a company dedicated to offering comprehensive automation services for the automotive sector in Mexico and the United States.

OUR PARTNERS



BOLTRONIC



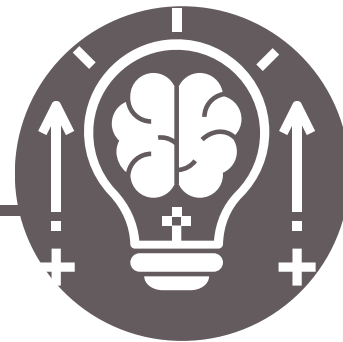
olivero
AUTOMAZIONI INDUSTRIALI

THROUGH OUR BOLTRONIC & OLIVERO ASSOCIATION, WE JOIN
FORCES TO GIVE BETTER SUPPORT TO OUR PARTNERS IN MEXICO

OUR VALUES



Break your
borders



We Find
solutions



Help them
get over
you



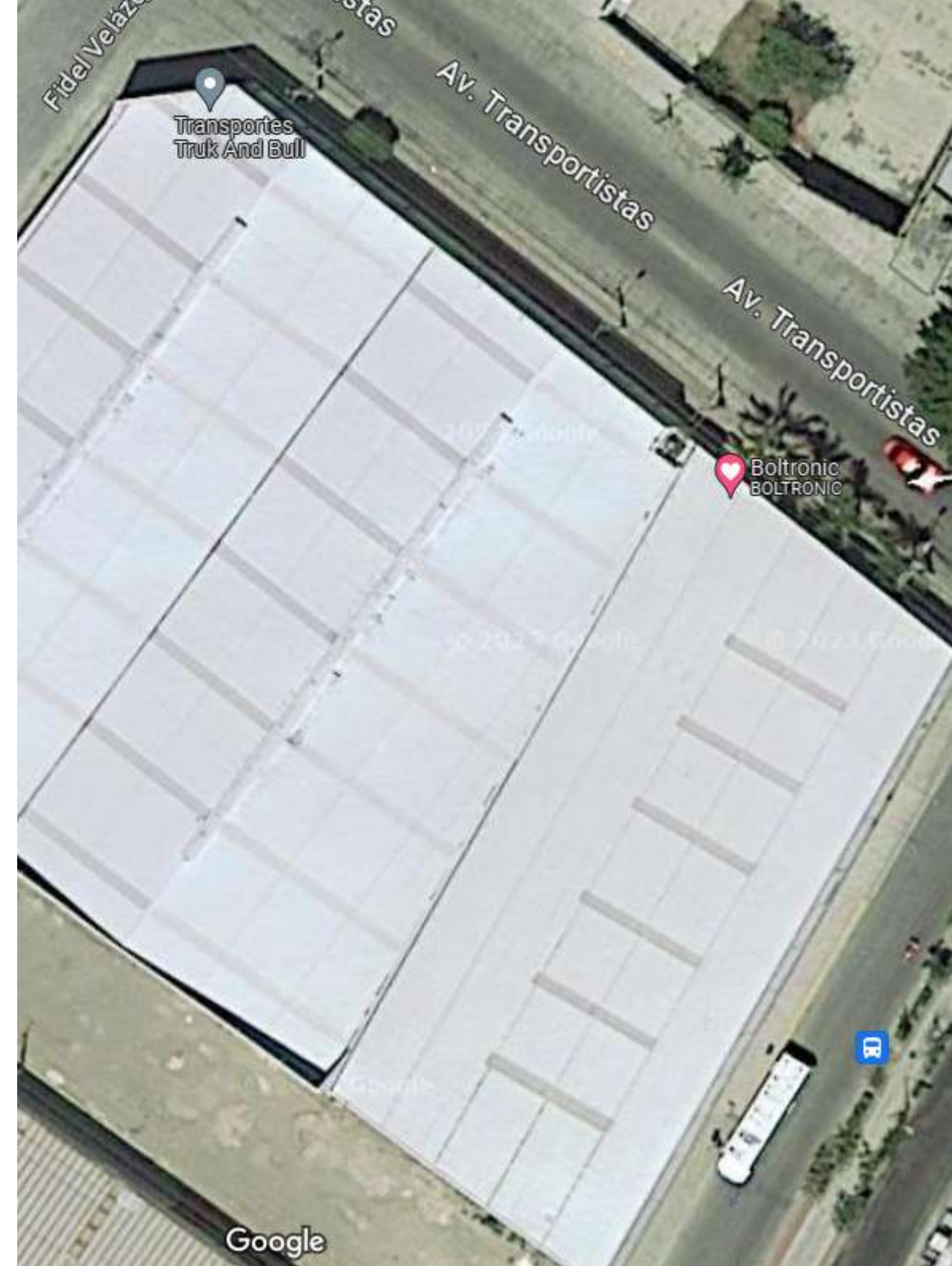
All
committed

INFRASTRUCTURE



Our facilities have 3570 m2

Léon, Guanajuato
México





OUR TEAM

León

9 Engineers
 3 Control eng
 3 Designers
 3 Mechanic /
 Electrical
 10 Welders
 10 Machinist
 11 Administrative

Querétaro

7 Employees
 1 Mechanic
 Engineer
 4 Machinist
 2 Administrative



USA

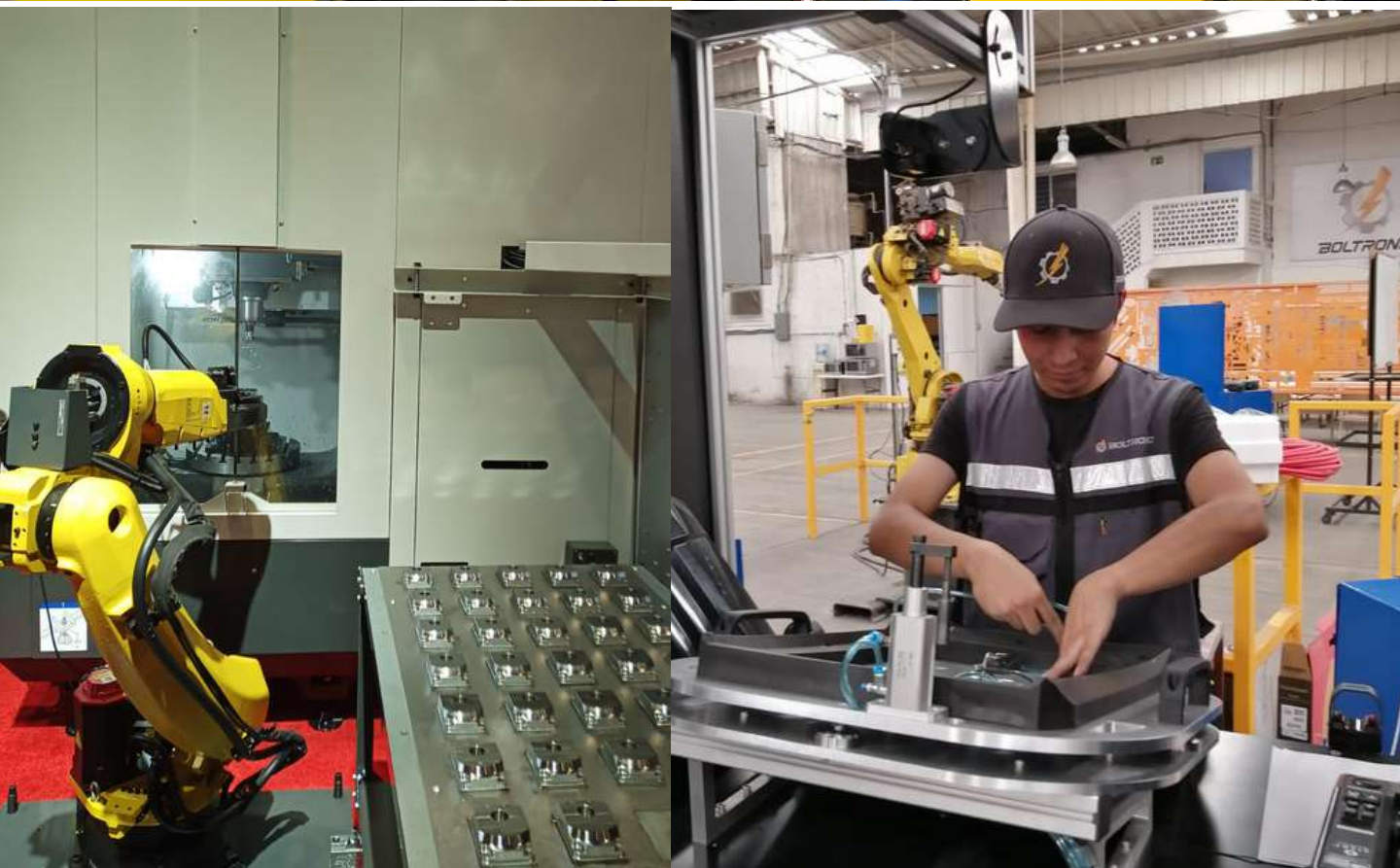
35 Employees (12TN full
 time; 15 subcontract)
 15 Mechanic Engineers
 13 Electrical Engineers
 4 Control Engineers
 3 Administrative





ROBOTIC CELLS

Robotic screw
Robotic Clips
Assembly Lines
Welding
Vision & Poka Yoke
Pick And Place





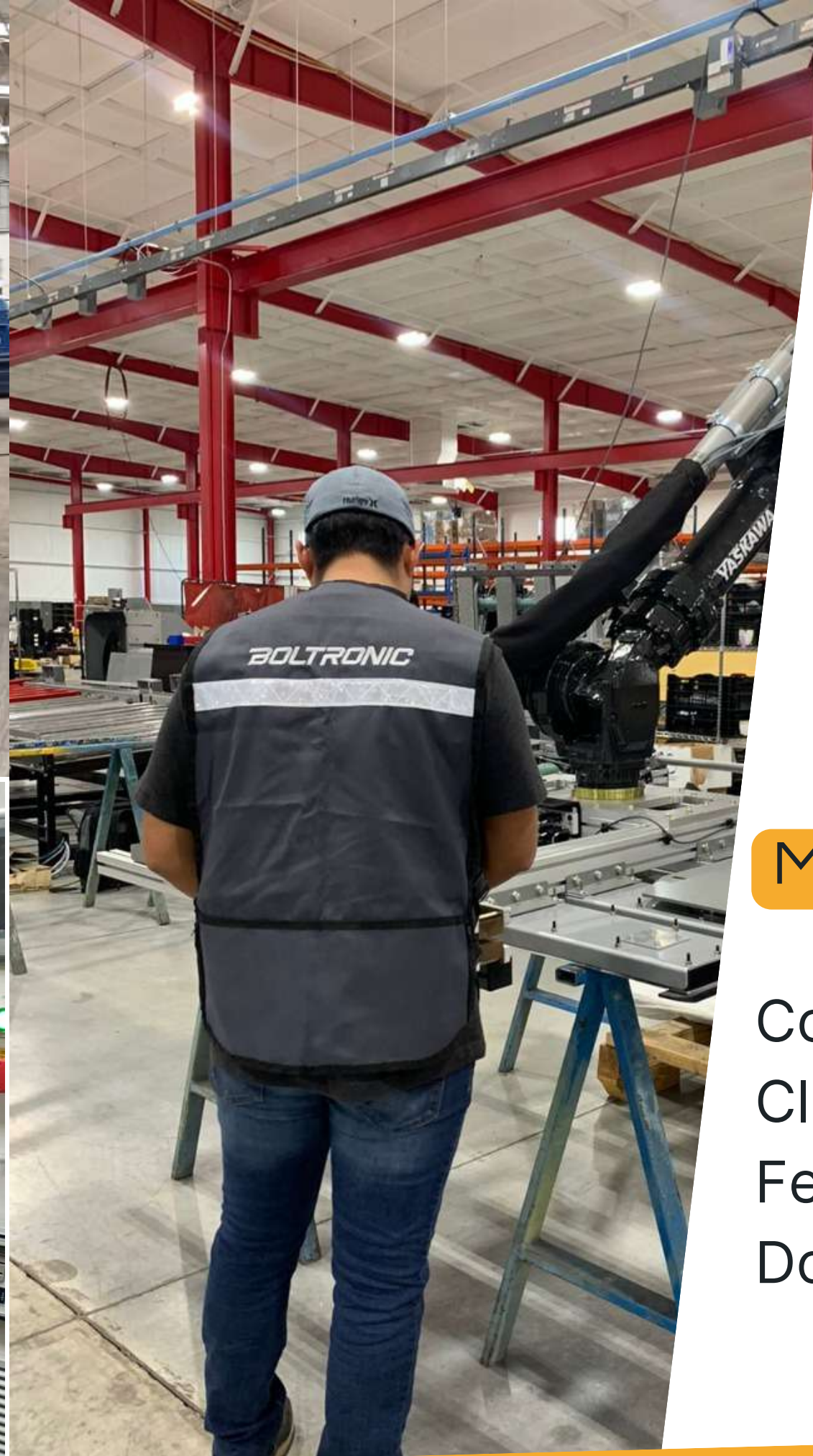
BOLTRONIC

MANUFACTURING

Assembly lines
Pick & place
Screwing stations
Laser marking

MATERIAL HANDLING

Conveyors
Classification systems
Feeding systems
Dosing systems



JIGS & CHECKING FIXTURES

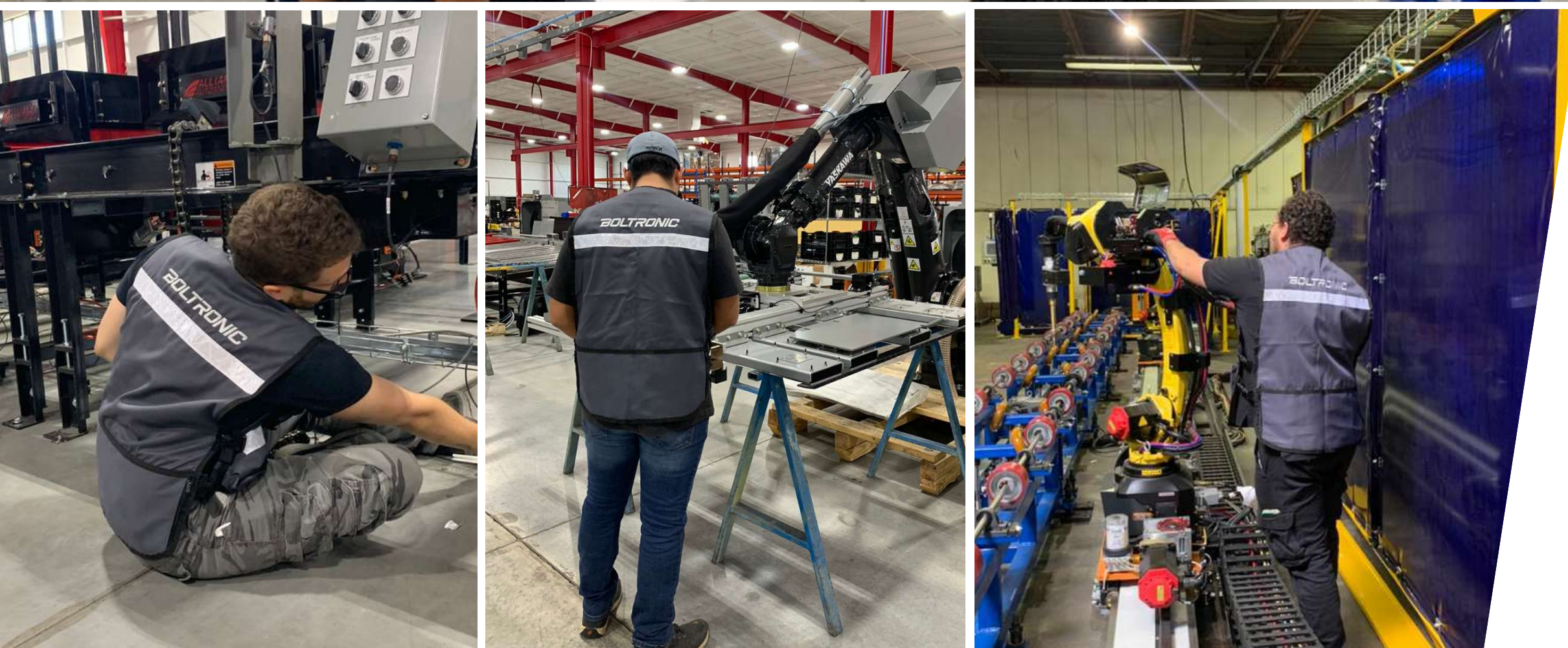
Inspection
Quality
Assembly
Poka Yoke

True Position
Diameters
Shape
Distances





TECHNICAL SERVICE



Programming
Robotic Integration
Vision systems integration
Maintenance
Machine installation
Mechanical and electrical design.





INSTALLATION OF INDUSTRIAL MACHINERY



Electric
Hydraulics
Mechanical





INSTALLATION OF INDUSTRIAL MACHINERY



Motorized overhead conveyor

Bridge crane

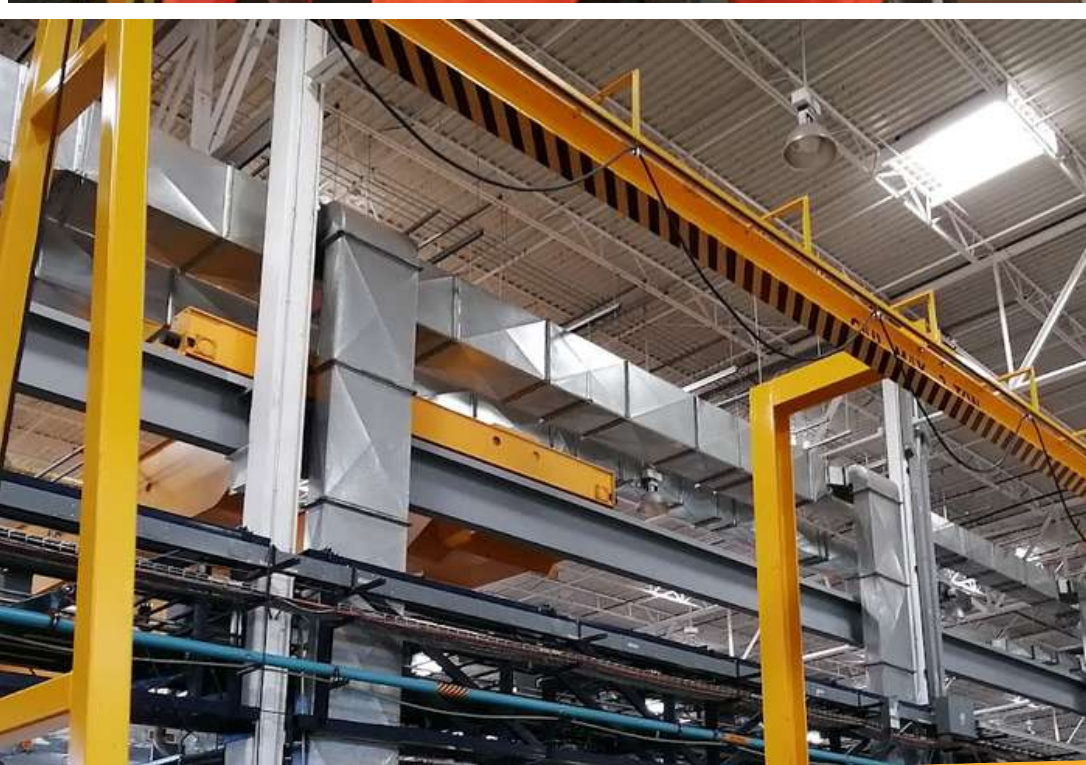
Storage silos

Installation of presses

Assembly and Structure

Steam generation

Ventilation systems





DESIGN PROGRAMS



PLC EXPERIENCE



Our equipment

1 CNC LASER MACHINE 4x10

1 CNC BENDING MACHINE 320 x 3200 mm Up to 1/4"

1 ELECTROSTATIC PAINTING BOOTH 1 4 X 4 MTS

1 ELECTROSTATIC PAINTING OVEN 1 4 X 4 MTS

4 ELECTRODE WELDER

4 MICRO WIRE SOLDER

3 CNC MACHINING CENTER VF-3

x-axis: 40in

Y axis: 20in

Z axis: 25in

1 CONVENTIONAL LATHE 1 52 IN

1 CONVENTIONAL ROUTER Table:10 1/2" x 42"

1 CNC MILLING MACHINE

X axis 40in

-Y axis 14in

-Z axis 12in

1 CNC MACHINING CENTER VF-2

Z axis 30in

-X axis (R) 7in

-X axis (D) 14in





NETWORK FOR FREELANCERS OR SUBCONTRACTORS

México

- 5** machining shops 5
(around 40 people total)
- 10** Plc programmers
- 3** Robot programmers
- 4** Mechanical designers

USA

- 15** Machine builders
- 10** Electrical wiring
- 5** PLC programmers



Shipping and
services



- MÉXICO
- USA



Customers



MÉX

Kellogg's



DRAXTON
Mobility inspired

SuKarne

 **MAGNA**



Phibro
ANIMAL HEALTH CORPORATION


SAINT-GOBAIN

NEUMAN
ALUMINIUM

 **KAUTEX**
A Textron Company

FFT

 **VORWERK**

 **KROMBERG
& SCHUBERT**



USA



GUIDE ENGINEERING
AUTOMATION AND ASSEMBLY SYSTEMS
A DIVISION OF NOVAMATIQ



**GRUPO
MEDRANO**

CHEP
A Brambles Company

 **ALLIANCE
AUTOMATION**



SUCURSAL TRANSPORTISTAS
(INDUSTRIAL AUTOMATION)

León, Guanajuato



Texas
Sales office

6800 Park Ten Blvd , Suite 217-N ,
San Antonio, TX USA



CEO

Sergio.padilla@boltronic.com.mx

lorena.ramirez@boltronic.com.mx

BUSINESS DEVELOPER