

➤ **INTERNATIONAL FREIGHT FORWARDERS**



**IMPORTCARGO**  
*importcargo.com.mx*

# International Coverage



**IMPORTCARGO SA  
(SPAIN HEADQUARTER)**



**IMPORTCARGO MÉXICO  
IMPORTCARGO ADUANAS**



**IMPORTCARGO DO BRASIL**



**IMPORTCARGO USA**

## ➔ About Us

# ▶ *International Freight Forwarders*



### IMPORTCARGO SPAIN

**1993**

#### Headquarter office:

- Elda, Alicante, Spain.



### IMPORTCARGO MEXICO

**2001**

- Guadalajara (GDL)
- Mexico City (MEX)
- León (BJX).



### IMPORTCARGO DO BRASIL

**2006**

- Porto Alegre (POA)
- Sao Paulo (GRU)
- Fortaleza (FOR).

Ensenada 

Pto. Mazatlán 

Guadalajara (GDL)   **GDL**

Pto. Manzanillo 

Pto. Lázaro Cárdenas 

  **MTY**

 Nuevo Laredo

Monterrey (MTY)

 Pto. Altamira

 **LEÓN**

Pto. Progreso 

Cancún (CUN)

  **CUN**

 Pto. Veracruz

  **CDMX**

Ciudad de México (MEX)

 Cd. Hidalgo



**PUERTOS**



**RUTAS**



**AEROPUERTOS**



**OFICINAS**



# **IMPORTCARGO MEXICO** *members of ...*



***International Air  
Transport Association***



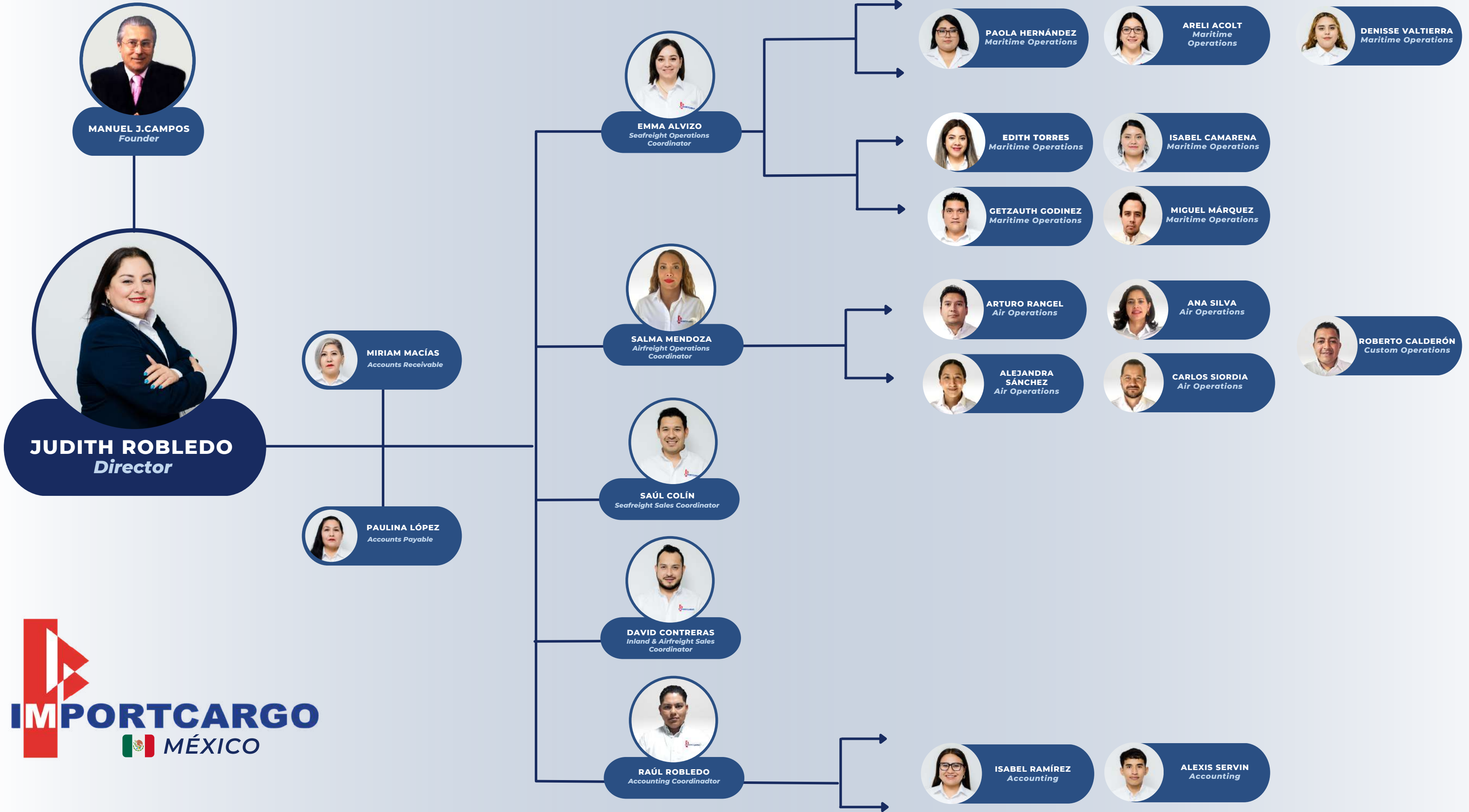
***International  
Federation of Freight  
Forwarders  
Associations***



***The Federation of  
National Associations of  
Cargo Agents of Latin  
America and the  
Caribbean***



***Mexican Association  
of Freight Forwarders***



# ➔ Our Plus



✓ **GOOD SERVICE**

✓ **COMPETITIVE RATES**

✓ **CUSTOMER SATISFACTION**



➤ **Main Services**

# IMPORTCARGO



**AIR**



**SEA**



**LAND**



**CUSTOMS**



**INSURANCE**





# **Air freight**

- **PAX** Passenger Aircraft
- **CAO** Cargo Aircraft Only
- **FRO** Frozen Goods
- **HUM** Human Remains
- **PER** Perishable Cargo
- **DGR** Dangerous Goods
- **AVI** Live Animal
- **GC** General Cargo





## **Sea freight**

- **FCL Dry, Reefer, OT, FR**
- **RORO**
- **LCL**
- **Break Bulk**
- **Project Cargo**





## **Customs**

**Our customs department advises importers on the tariff study when classifying their products and reporting taxes to pay for any type of merchandise that enters the country.**

**We are always in continuous training because in our country there are constant regulations on foreign trade.**

**In México City we have our own people who take charge of customs clearance, merchandise inspections, labeling, among other services.**





# Warehouse

**IMPORTCARGO warehouses are equipped with all security measures our customers needs and comprehensive inventory control.**

- Picking
- Packing
- Distribution
- Weighing
- Repackage
- Storage
- Warehousing
- Customized labelling (NOM´s)
- Inventory Management
- Sampling





 **Our Team**

# ➤ Main Clients



**Wilson**



*flexi*

AstraZeneca 

**Lenovo**

**MULOX**



**SEARS**



Askoll

**JABIL**

**HITACHI**



**FEPACO**



**PLEXUS**



VIA UNO



# ➤ Contact Us

**JUDITH ROBLEDO LOZANO**

➤ **DIRECTOR**

judith.robledo@importcargo.com.mx  
+52 (477) 380 6473



**DAVID CONTRERAS**

*Inland & Airfreight Sales  
Coordinator*

david.contreras@importcargo.com.mx  
+52 (477) 554 1623



**SAÚL COLIN**

*Seafreight Sales Coordinator*

saul.colin@importcargo.com.mx  
+52 (477) 380 2397



**SALMA MENDOZA**

*Airfreight Operations  
Coordinator*

salma.mendoza@importcargo.com.mx  
+52 (33) 1369 0222



**EMMA ALVIZO**

*Seafreight Operations  
Coordinator*

emma.alvizo@importcargo.com.mx  
+52 (55) 8012 2244



**RAÚL ROBLEDO**

*Accounting Coordinator*

raul.robledo@importcargo.com.mx  
+52 (477) 123 9171



**MIRIAM MACÍAS**

*Accounts Receivable*

miriam.macias@importcargo.com.mx  
+52 (477) 367 0105



**PAULINA LÓPEZ**

*Accounts Payable*

paulina.lopez@importcargo.com.mx  
+52 (477) 160 7567





## ➤ HEADQUARTER OFFICE

### **IMPORTCARGO MEXICO SA DE CV**

*Federico Barocci No. 129 Col  
Jardines de Oriente C.P. 37257  
León Guanajuato Tel +52 (477)  
780-2939 / 2911/ 3001*

## ➤ MEXICO CITY OFFICE

*Chimalhuacán No. 71 EDIF A  
101 Col. Peñón de los Baños  
C.P. 15520 Ciudad de México  
Tel +52 (55) 2643-2037 y (55)  
7160-1509*

## ➤ GUADALAJARA OFFICE

*Lázaro Cárdenas No. 2 Int. 3  
Col. Refugio del Valle  
C.P. 45659 Tlajomulco de  
Zuñiga, Jalisco  
Tel +52 (33) 3330-1098*



**Importcargo México SA DE CV**



**@importcargomexico**



**Importcargo México**