



SOIN3



LEAN MANUFACTURING



- Aluminio
- Ecopipe
- Durawood



SOIN3

INGENIERIA EN EL MANEJO
DE MATERIALES

NORMA DE EMPAQUE

- Racks metálicos
 - Celdados
- Dunnage en plástico
 - corrugado
- Peines en foam, XLP, PVC



SERVICIOS ESPECIALIZADOS

- Entregas secuenciadas
- Gestión de almacenes
- Subensamblajes
- Gestión y mantenimiento de flotas de embalaje



KARAKURIS

- Carro de abasto
- Abasto por gravedad
- Automatización low cost
- Transportadores





Lean Manufacturing Durawood Applications



Lean Manufacturing

Durawood Applications



VENTAJAS DEL EZPRO

- Flexible e irrompible
- Ligero
- Resistente a impactos
- 100% Reciclable
- No tóxico
- Sin astillas ni bordes afilados
- Excelente resistencia a productos químicos y disolventes.
- ESD disponible



Lean Manufacturing Aluminum Applications





Lean Manufacturing Eco Pipe Applications

AMS ADVANCED MECHATRONICS SOLUTIONS, INC.
AUTOMATION, OMT & LEAN MANUFACTURING

ECO-PIPE

10030 Via de la Amistad, San Diego, CA 92154
619.661.5985 619.661.5995
www.ams-fa.com

The advertisement graphic shows several rolls of colorful PVC pipe (blue, green, yellow, grey) on the left. On the right, it features the AMS logo and contact information for Advanced Mechatronics Solutions, Inc. The text "ECO-PIPE" is prominently displayed in a bold, italicized font.

Advantages of **ECO-PIPE**

- Eco-Friendly
ECO-pipe is fully recyclable.
- Money Saver
Economical, save money!

The graphic highlights two key advantages of Eco-Pipe. It features a green checkmark icon and a green leaf icon for "Eco-Friendly", and a green money icon for "Money Saver". Below each icon is a brief description of the benefit.



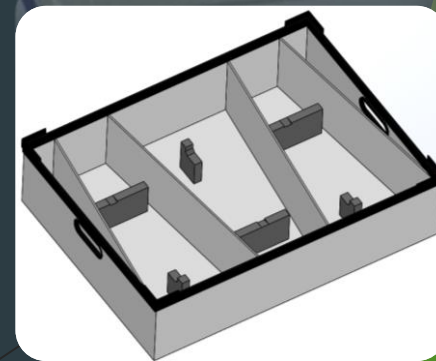
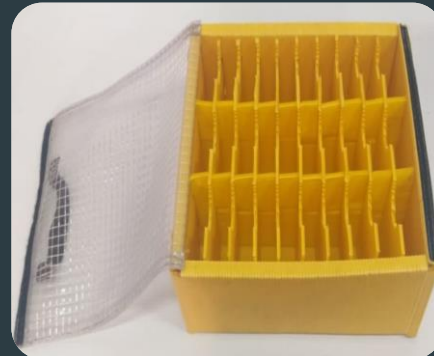
Racks Customized Solutions



Custom Packaging Solutions (ultrasonic welding)

According to specifications can be used in different materials:

- Plastic carton
- PP Corrugated
- Coroplast
- Eurogrey

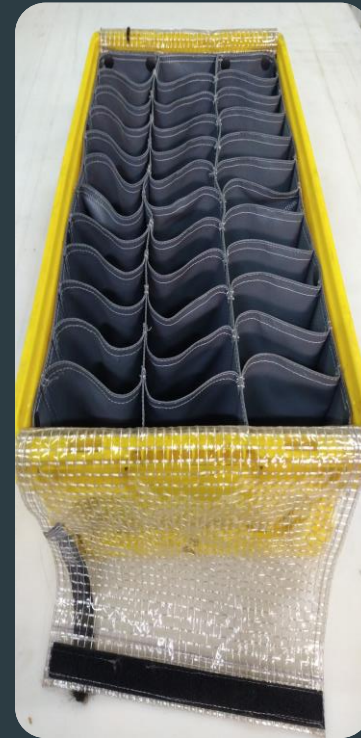
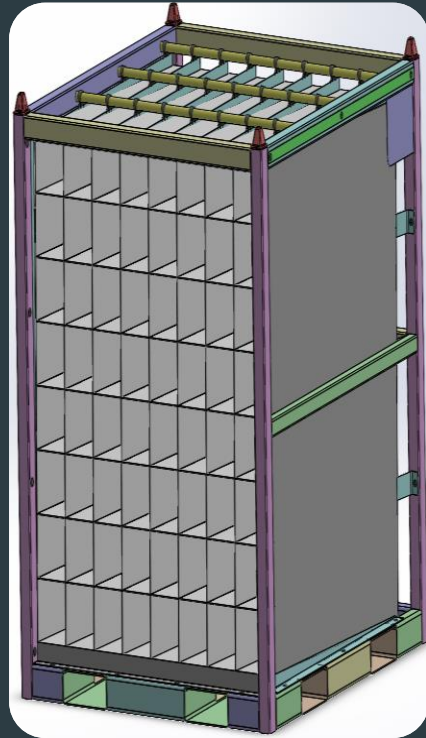




Custom Canvas Solutions (Design and development)

According to specifications can be used in different packaging:

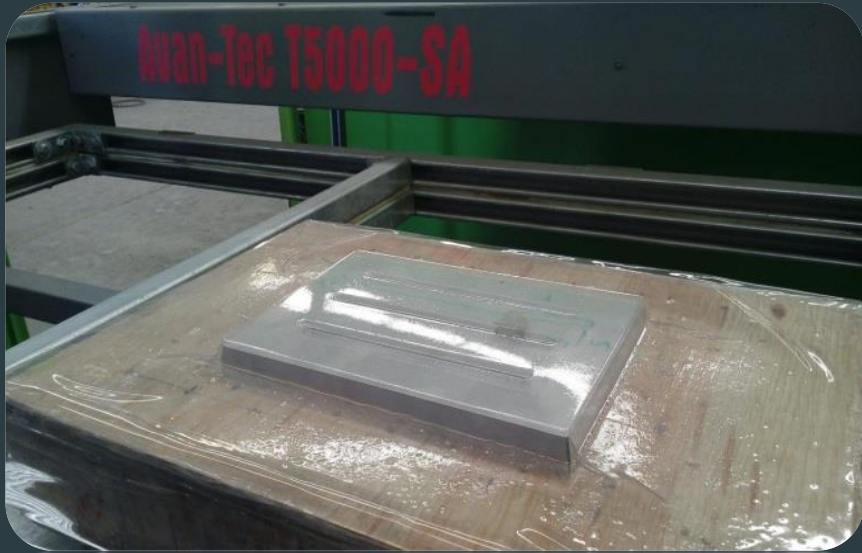
- Plastic Boxes
- Bulks container
- Metallic racks
- Special projects





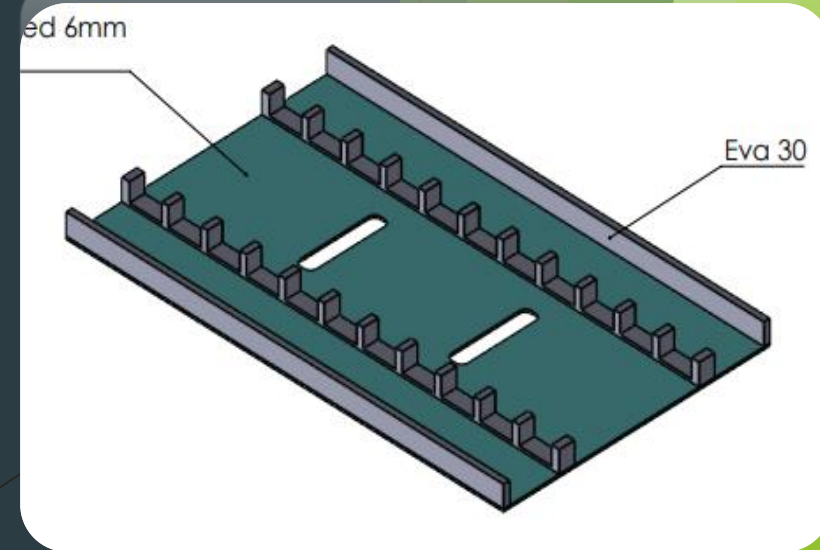
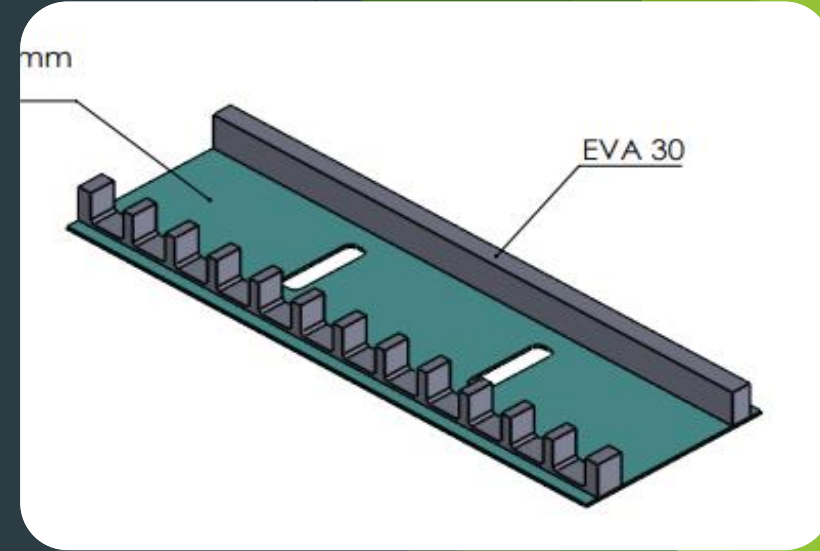
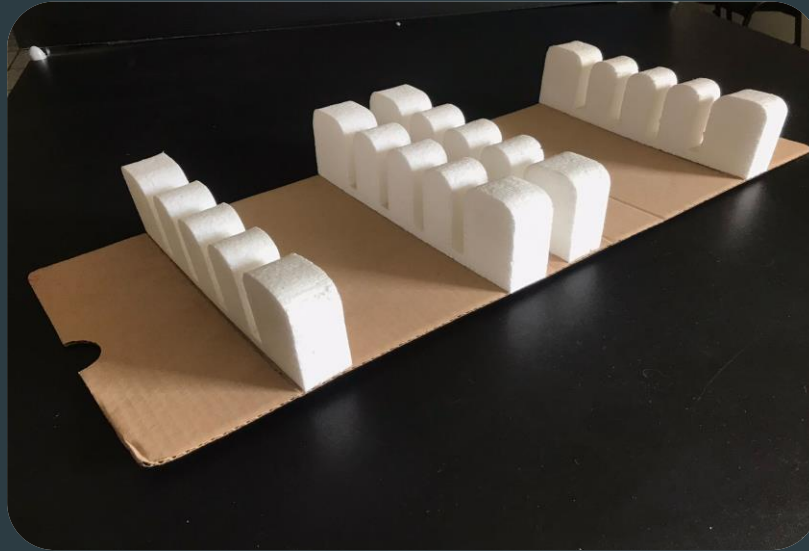
SOIN3

Custom Thermoformed Solutions (Design and development)





Custom foam and carton Solutions (Design and development)







Karakuris







SOIN3

Specialized services for the automotive sector

Packging Floats Management

Sequenced Supply





FACILITIES AGUASCALIENTES, AGS.





FACILITIES LEON, GUANAJUATO





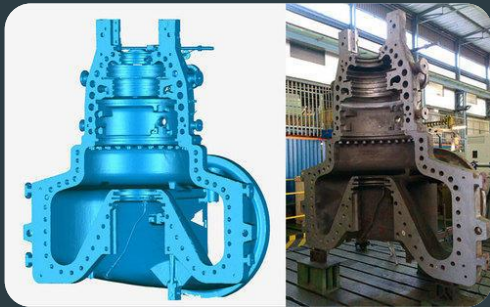
OFFICE OF REPRESENTATION & SALES SLP





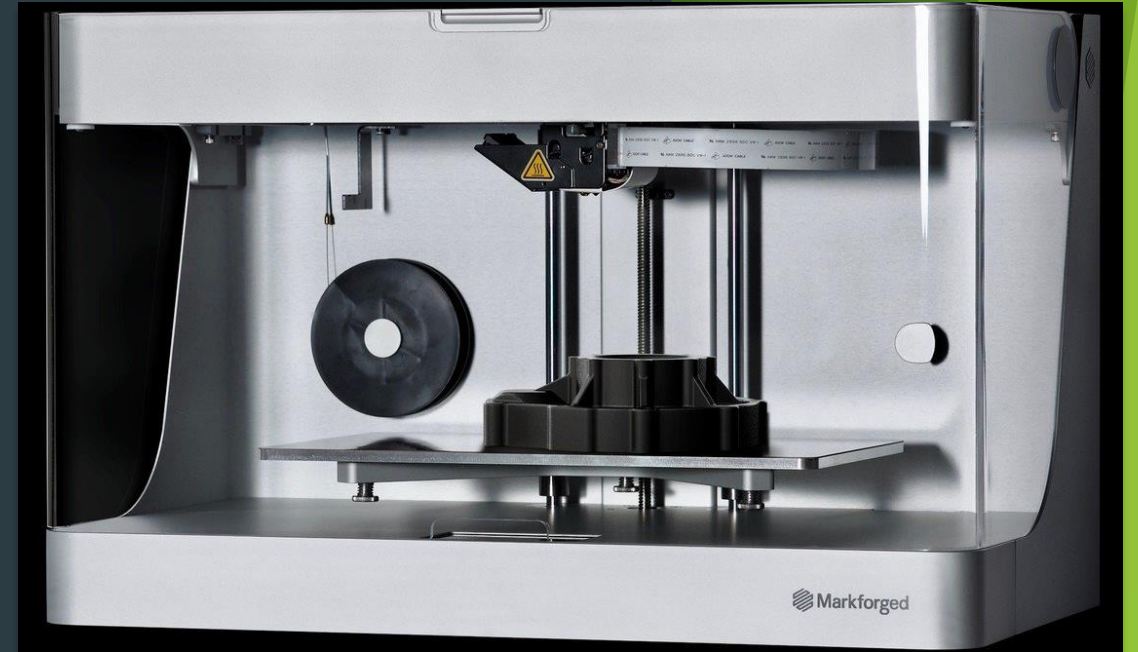
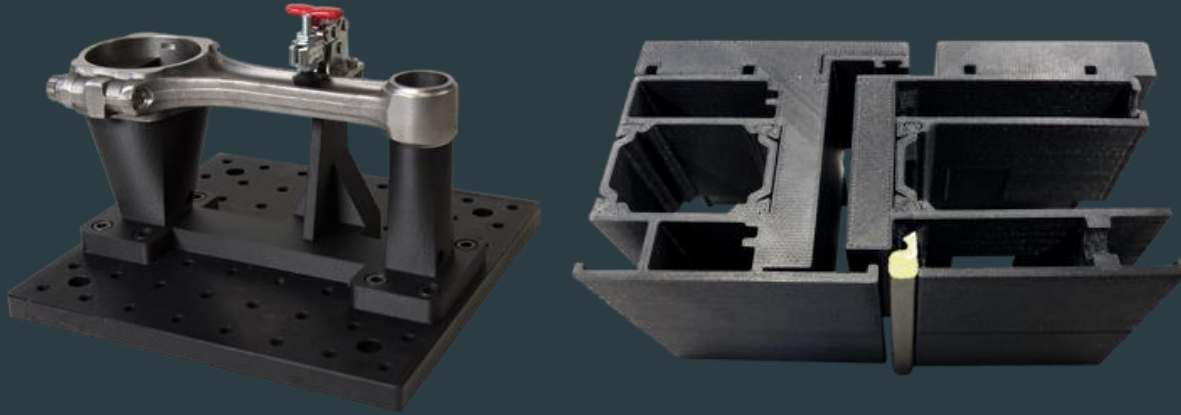
Escáner 3d

- Precisión: Maximum 0,100 mm
- Exactitud volumétrica: 0,300 mm/m
- Volumetric accuracy : 550 000 measurements / second
- Texture resolution : De 50 a 250 PPP
- Scope of the size of the parties : (recommendedo) 0,05 – 0,5 m





3D Print Service



- Dimensions of impression: Maximum 320 mm x 132 mm x 154 mm.
- Maximum layer resolution : 100 micrones
- Printing materials: Carbon Fiber, Glass fiber, Kevlar etc.
- Applications: prototyping, final parts, that in automation, etc.



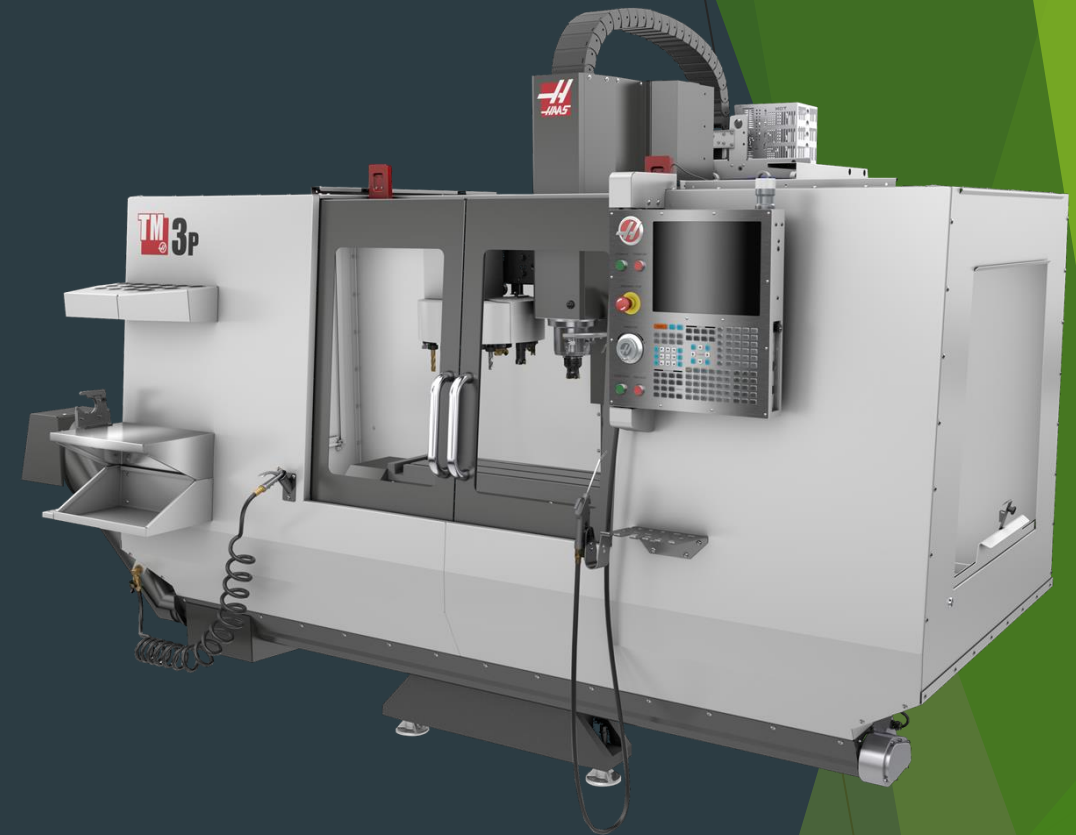
Machining Center CNC

Workspace (axes of work).

X axis: 1016 mm,

Y axis: 508 mm,

Z-axis: 406 mm³





Cutting Waterjet Process

❖ MAIN FEATURES

Cutting Capacity (depth)

- From 1.5 to 250 mm.

Materials

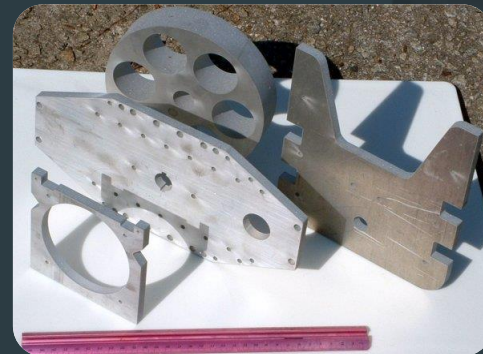
- Metals, glass, stone and composites.

Cutting table dimension capacity

- 6ft - 10 ft

Accuracy

- * 0.127 mm.





ELECTROSTATIC PAINT

❖ MAIN FEATURES

Oven of 4.0 *3.0* 2.5 Mts

Oven with capacity of burning previous paintings.

Capacity to use powder and & liquid paint

Capacity of 200^a.





WELDING ROBOTS

❖ MAIN FEATURES

Functionality in semi and automatic production lines
It can be used for plasma cut
High welding Quality
Accuracy and speed welding



WE'RE IN RECERTIFICATION



Main Customers

